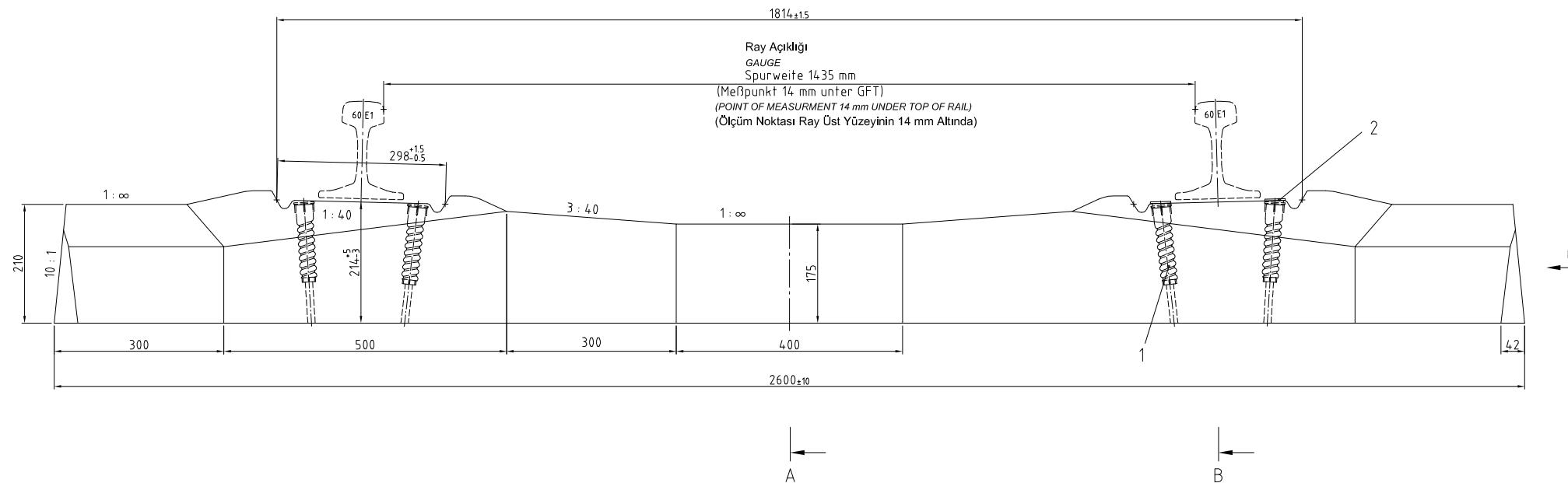


Gegenseitige Verwindung der Schienenaufleger
bei einer Meßbasis von 150/100 mm < 0.7 mm
THE RECIPROCAL TWIST OF THE RAIL SEATS
WITH A BASELINE OF 150/100 mm < 0.7 mm
Ray Seletinin Oturduğu Yerin Karşılıklı 150/100 mm
Ölçü Bazında Burulması < 0.7 mm

Abweichung der Neigung im Schienenaufleger
auf 150 mm Länge ±0.5 mm
THE DIFFERENCE OF GRADIENT IN THE RAIL SEAT
IN A LENGTH OF 150 mm ±0.5 mm
Ray Seletinin Oturduğu Yerin
150 mm Uzunluğundaki Eğilim Farkı ±0.5mm

Höhendifferenz beider Schienenaufleger ≤ 3mm
THE DIFFERENCE IN LEVEL OF THE RAIL SEATS ≤ 3mm
Ray Seletinin Oturduğu Yerin
Yükseklik Farkı ≤ 3mm



ANMERKUNGEN:

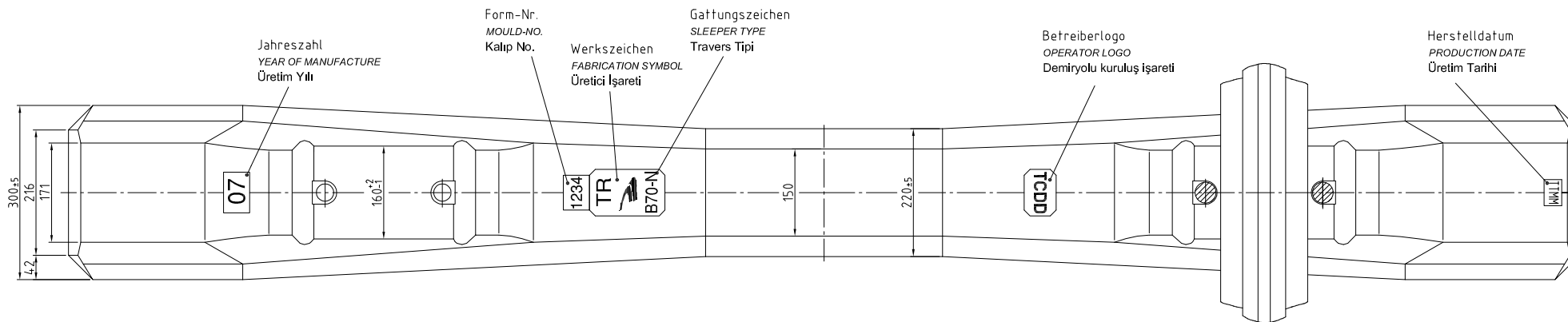
Ausführung nach
DIN EN 13230 und DBS 918 143
Befongüte: C 50/60
Betonvolumen: ca. 114 l
Befongewicht: ca. 290 kg
incl. Bewehrung
ohne Schienenbefestigung

REMARK:

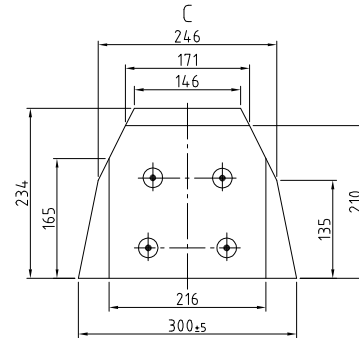
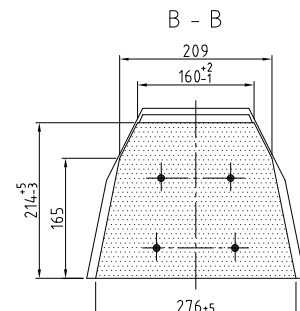
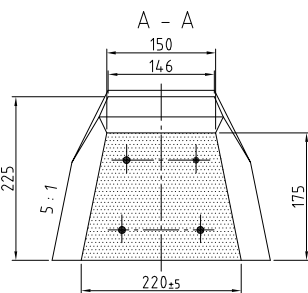
Production according to
DIN EN 13230 and DBS 918 143
Concrete Quality: C 50/60
Concrete volume: approx. 114 l
Concrete weight: approx. 290 kg
including reinforcement
without rail fastening

REMARK:

Gerçekleştirme
DIN EN 13230 ve DBS 918 143 göre
Beton Kalitesi: C50/60
Beton Hacmi: ~ 114 l
Beton Ağırlığı: ~ 290 kg
Betonarme Çeliği Dahil
Bağlantı Sistemi Hariç



Dazugehöriger Schal- und Bewehrungsplan N106177G	BOARDING AND REINFORCEMENT PLAN N106177G	Bağlı Olan Betonarme Çeliği Ve Kalıp Plan No. N106177 G
--	--	---



2	4	Verschlußstopfen PLUG Tapa				Kunststoff PLASTIC Plastik
1	4	Kunststoffschraubdübel PLASTIC DOWEL Plastik Döbel	Sdü 25	Vossloh	13419	Kunststoff PLASTIC Plastik
Pos.	Stück	Benennung	Kurzbezeichnung	Lieferant	Zeichnungs-Nr.	Material
Pos.	PCS.	DESIGNATION	SHORT TERM	SUPPLIER	DRAWING-NO.	MATERIAL
Pos.	Adet	TANIM	Kısa Tanım	Üretici	Plan No.	Malzeme

[Verwendung] (intended use) (Kullanım Alanı)
Schienen 60 E1 (UIC 60) für Oberbau Vossloh W 14 K
RAILS 60 E1 (UIC 60) WITH FASTENING VOSSLOH W 14 K
Vossloh W 14 K ile 60 E1 (UIC 60) Rayları

Statu	0003 - Freigegeben
Rev	Anderung

Allg. Toleranz	15
Allg. Toleranz	DIN EN 13230

Schofteroberbau - TÜRKİE
Ballast track - Turkey
Ballastlı Ray Sistemi - Türkiye
BetonSchwelle B 70 W60
Concrete sleeper B 70 W60
Beton Travers B 70 W60

Zeichnungsnummer	N106176G	Blatt	1
Artikelnummer	453-1505088A	SAP-Nr.	1 Bl.

RAIL.ONE

841 x 594 mm